



Home Automation Experiment in Corrèze



CONTENTS

1. Home Automation Experiment


- a) An observation
- b) Know-how
- c) Objectives
- d) Equipment
- e) Evaluation

2. Associated Projects

- a) The cognitive-behavioural unit (C H Brive)
- b) Model home at the *Maison de l'autonomie* (Independence House)

1. Home Automation Experiment

a) An observation

Persons	Personalised Independence Benefit (APA)													
	Today	Tomorrow												
<ul style="list-style-type: none"> ■ Low income ■ Housing: <ul style="list-style-type: none"> ■ old ■ in poor repair ■ poorly equipped ■ unsuitable 	<ul style="list-style-type: none"> ■ APA at home <table border="1"> <thead> <tr> <th>Criteria</th> <th>2008</th> </tr> </thead> <tbody> <tr> <td>GIR 1-4</td> <td>4007 pers</td> </tr> <tr> <td>Total benefits</td> <td>€19,380,000</td> </tr> </tbody> </table>	Criteria	2008	GIR 1-4	4007 pers	Total benefits	€19,380,000	<ul style="list-style-type: none"> ■ Projection 2030 <table border="1"> <thead> <tr> <th>Criteria</th> <th>Forecasts</th> </tr> </thead> <tbody> <tr> <td>GIR 1-4</td> <td>+30%</td> </tr> <tr> <td>Over 75</td> <td>Baby boomers</td> </tr> </tbody> </table> <p><i>Different life expectancy of men and women</i></p> <p> <u>ISOLATION</u></p>	Criteria	Forecasts	GIR 1-4	+30%	Over 75	Baby boomers
Criteria	2008													
GIR 1-4	4007 pers													
Total benefits	€19,380,000													
Criteria	Forecasts													
GIR 1-4	+30%													
Over 75	Baby boomers													

b) Know-how



Remote helpline platform

Corrèze has a departmental remote helpline platform

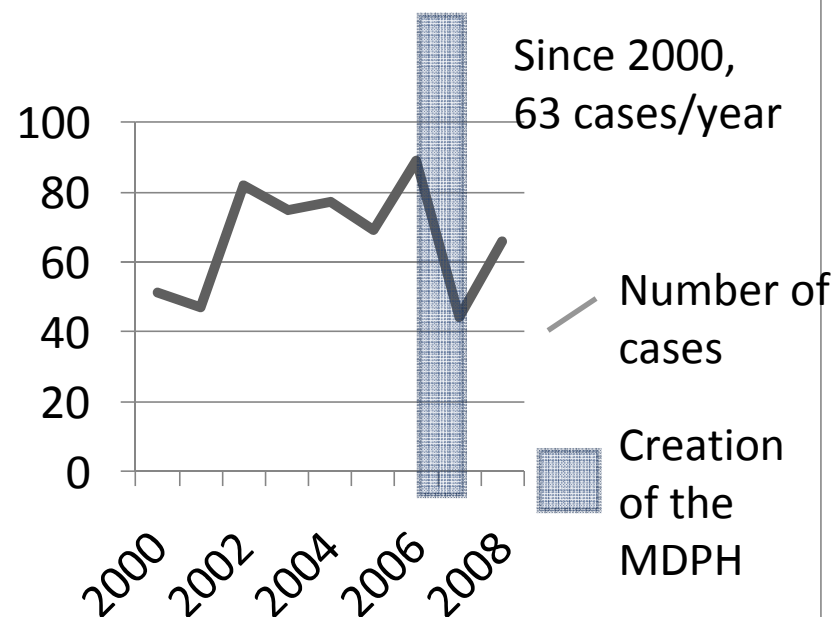


4800 subscribers in Corrèze



Adaptation at home

Number of 'home support' cases



c) Objectives

Independence House

One-stop assistance:

- For elderly persons
- For disabled persons
- Favouring people skills
- Providing suitable equipment to make daily life safer

Home Automation

Now:

- Make people safer
- Bring people out of isolation

Soon:

- Facilitating communication and the operation of services in partnership with Orange
- Locating disoriented persons

Home automation technology can provide a pragmatic solution to the needs of the elderly or the disabled.

d) Equipment



BASIC PACKAGE

- *Bracelet, pendant*
- *Shower pull-cord*
- *Emergency call squeeze bulb*
- *Gas detection*
- *Smoke detection*
- *CO2 detection*
- *Remote intercom*
- *Door contact*
- *Infra-red detection*
- *Photophone*
- *Illuminated path*

Individual adaptations for specific cases

e) Evaluation

The evaluation has several aspects:

- Technical
- Medical
- Sociological

Scientific directors of the project:

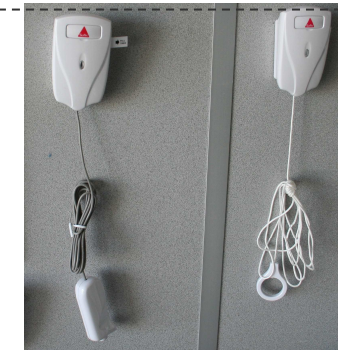
- Professor Dantoine (CHU Limoges)
- Doctor Vincent Rialle

288 devices installed:

- Smoke detectors: 86
- Shower pull-cords: 51
- Remote intercoms: 40
- Gas detectors: 29
- Illuminated paths: 29
- Emergency call squeeze bulb or handle: 27
- etc.

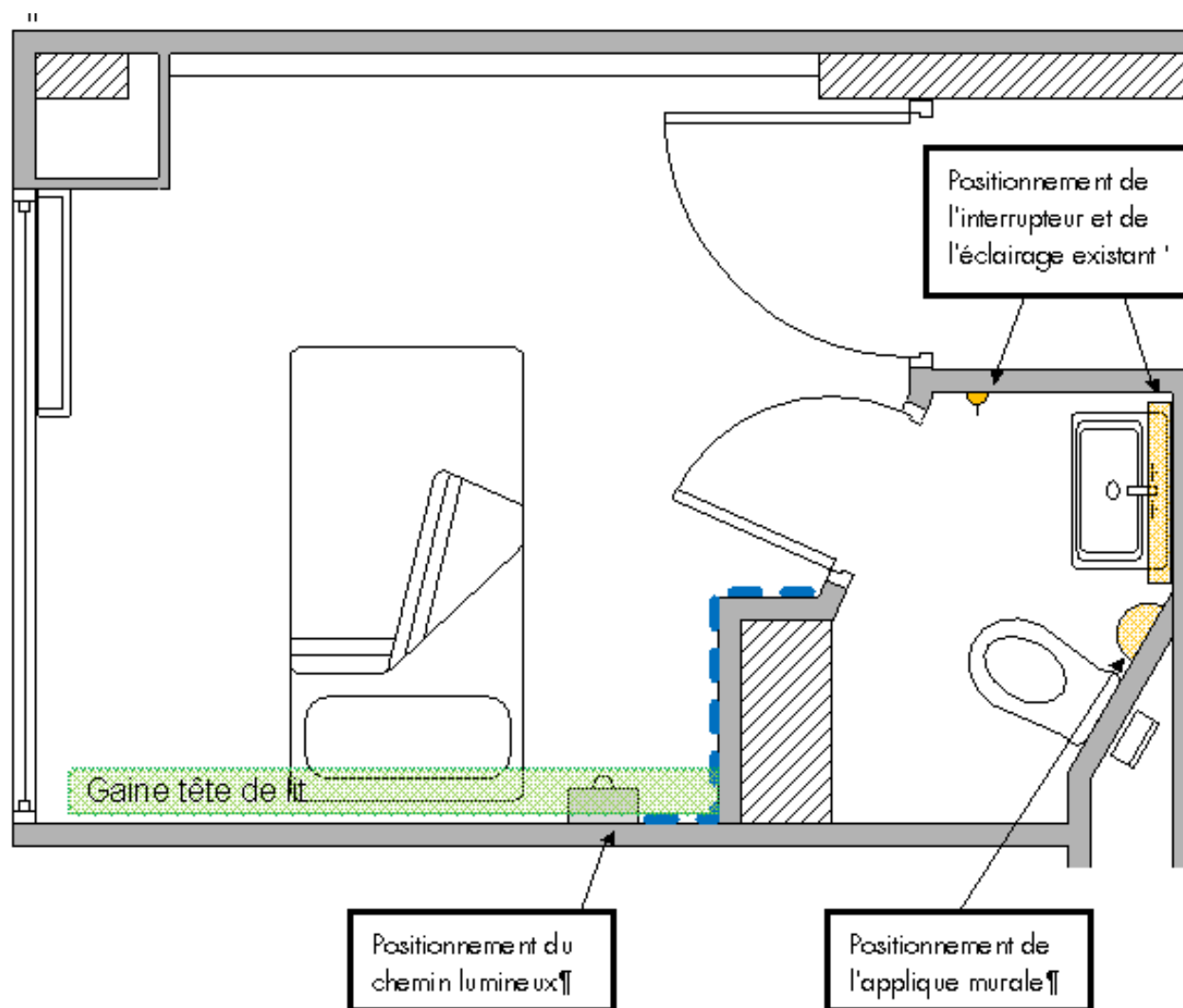
With 108 participants, there have already been:

- 1554 alarms detected
- Of those, 175 from smoke detectors

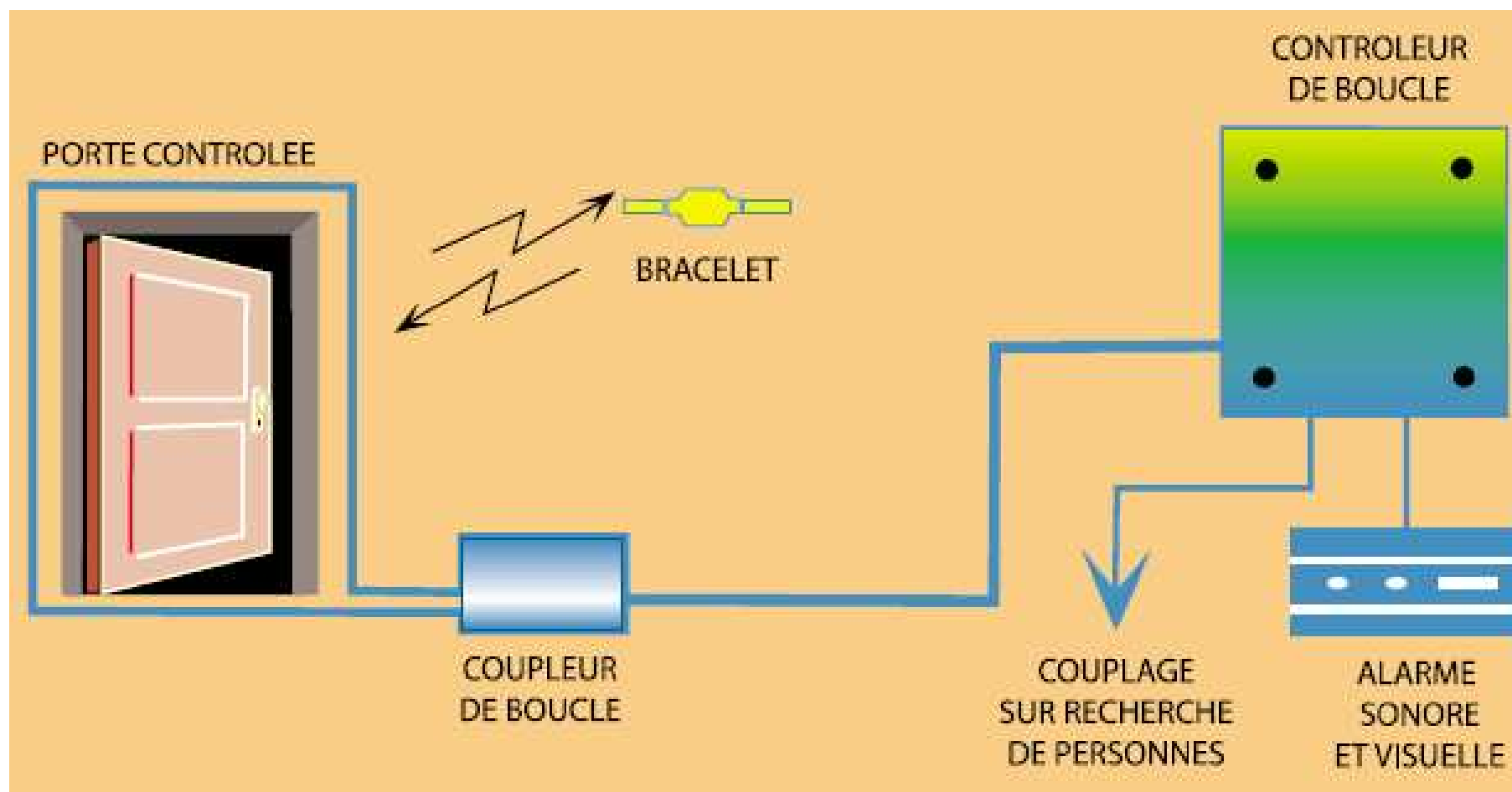


2. Les travaux connexes

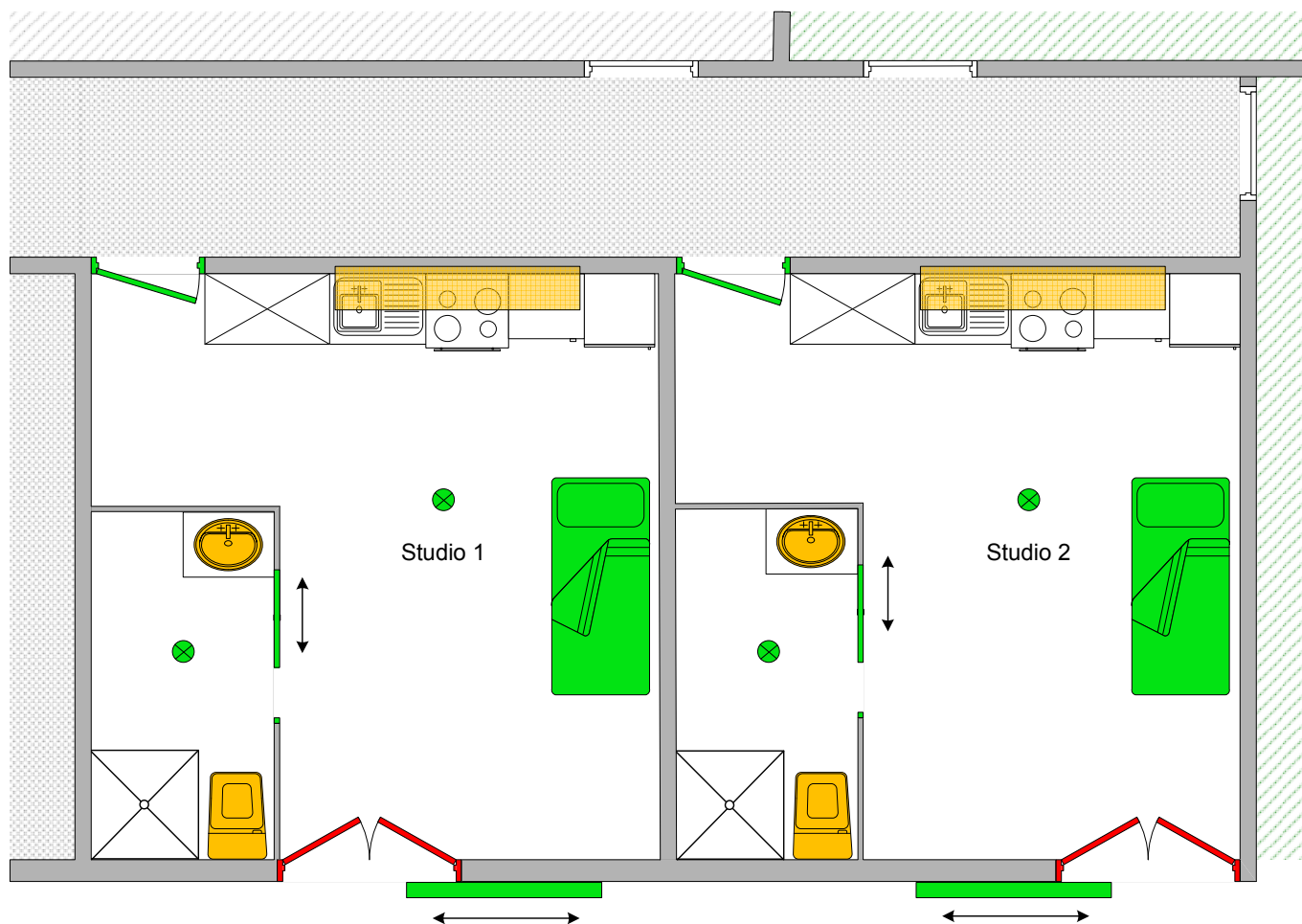
a) L'Unité Cognitivo-Comportementale






Le système anti-fugues



b) Le logement témoin de la MDA



-  Matériel automatisable par ajout d'un système
-  Matériel automatisable par ajout d'un système (étudié en variante)
-  Matériel non-automatisable (nécessitant un remplacement du matériel)