

LIMOUSIN.doc2010

A PORTRAIT OF THE LIMOUSIN REGION WITH FIGURES

Identity card | Demography | Education and Training | Research and Development | Living conditions | Jobs
Unemployment | Economic activity | Environment and living environment | Transport and telecommunications

LIMOUSIN.doc

contents

- IDENTITY CARD # 4
- DEMOGRAPHY # 10
- EDUCATION AND TRAINING # 12
- RESEARCH AND DEVELOPMENT # 14
- LIVING CONDITIONS # 16
- JOBS - UNEMPLOYMENT # 18
- ECONOMIC ACTIVITY # 20
- ENVIRONMENT AND LIVING ENVIRONMENT # 28
- TRANSPORT AND TELECOMMUNICATIONS # 32
- TO FIND OUT MORE # 34



2010

Limousin.doc is a portrait of the Limousin region with figures. It has been produced by the Limousin Expansion Information and Business Intelligence Unit and the Limousin Regional Council Documentation Department.

PORTRAIT OF THE LIMOUSIN REGION WITH FIGURES

This collection of key figures has been drawn up using the latest available public information and provides a statistical, summary overview of the Limousin. It is organised under 8 headings to give you access to reference data for the region. "To find out more" contains the contact details of twenty data-producing organisations from which you may obtain more detailed information.

Limousin.doc appeared for the first time in 2007.

Contacts:

Isabelle Veyriras

Mission Information et Intelligence
Économiques - Limousin Expansion
Tel. 33(0)5 87 21 21 21
E-mail: contact@limousin-expansion.fr
<http://www.limousin-expansion.fr>

Dominique Zabaleta

Service Documentation
Conseil Régional du Limousin
Tel. 33(0)5 55 45 19 00
E-mail: documentation@cr-limousin.fr
<http://www.region-limousin.fr>

THE LIMOUSIN

An attractive area opened up to the outside world

The region has been opened up in particular by the A20 and A89 motorways and the RN 145 which connect the Limousin to the rest of the country, but also by Limoges international airport which serves 400,000 passengers a year. The Limousin local communities have mobilised the biggest high speed public services commission in Europe to instal 1,200 km of fibre optic throughout the area, to give the population high speed communications under the best conditions.

The Limousin is a demographic growth area as may be seen from its population attraction which places it 8th among the French regions, or the University, one third of whose students come from other academic institutions. But also due to business where 37% of Limousin firms are controlled by foreign capital. The dynamism of the Limousin businesses and research centres is evident especially in the labellisation of two regional competitiveness clusters.

Successful road openings

Limousin is at the intersection of two national and internationally used motorways: a north-south line: the A20 which connects Paris to Toulouse and on to Barcelona, a transverse line: the A89 connecting Bordeaux and Clermont-Ferrand. Like the road, the Paris-Orleans-Limoges-Toulouse (PALITO) connection is a prime route with daily 3-hour connections between Limoges and Paris. A-roads complete the grid. The Brive-Lille route was brought into service as a three-year experiment and serves Limoges and Roissy Charles de Gaulle airport, also connecting into the East and North TGV network. By 2016, a high speed bar will link Limoges and Poitiers, making Paris only 2 hours from Limoges and 3 from Brive. Also the Limousin region is served by major railway lines: 843 km of line for TER (Transports Express Regionaux) which give a dense cover in the area (86 stations and halts).

Limoges Bellegarde airport has grown progressively from 132,000 passengers per year in 2001 to 372,000 in 2008, taking advantage of the low cost connections with England and with a beneficial effect on the interior routes. The Brive-Laroche airport, whose site was unsuitable, will be replaced in time by Brive-Souillac, near Lot. Increased passenger traffic is expected as a result of the change of site.



Population recovery

Traditionally an emigration area, today Limousin population is growing again because arrivals are exceeding departures. Thus, in 8 years Limousin has gained 15,500 inhabitants and lies 15th for mainland France in population growth. Drawn by the quality of life, the presence of the landmark centres of Limoges and Brive, more people are trying the Limousin experience: mainly originating from Ile-de-France, the neighbouring areas, North Pas-de-Calais, PACA and Rhone-Alpes, but also the British (8,000 British have come to live in Limousin since the 90s). One out of 2 newcomers is under 30 years old. Population trade is only really negative in 5 regions - Midi-Pyrénées, Poitou-Charentes, Languedoc-Roussillon, Aquitaine and the Pays de la Loire. The Limousin age profile still shows an aging population. The Limousin is trying to capitalise on this by pioneering the development of home care services.

If the region is losing young people, it is attracting almost as many. This is because of the variety and quality of training available and easier access to housing than at national level. Nevertheless the challenge remains to retain these young people, most of whom leave the Limousin on completion of their studies.

The spatial distribution of the population between East and West is comparatively uneven. Average population density of 43 inhabitants /km² is much lower than the national average. Out of 737,000 Limousins, 1/4 live in the Limoges urban area, and nearly 1/10 in that of Brive. However, the East of the Limousin has no towns bigger than 15,000 inhabitants. The Limousin population is basically more rural (38% in 2006) than in metropolitan France (22%).

Varied economic activity

With a GDP per inhabitant of 24,518 € in 2007, the Limousin may be compared with regions of Lorraine and Lower Normandy. Unemployment is considerably below the national average.

The Limousin economy is more agricultural than in other regions. Serious efforts are made for a structured and sustainable agriculture, as shown by the number of products under AOC, label or compliance certificate (AOC golden delicious apples and walnuts, labelled beef and pork, lamb with compliance certificate).

Limousin industry revolves round a network of small and medium firms and industries and is also the site of flagship firms in their field (Legrand, Madrange). The region's main industrial sectors are food processing, electrical and electronic, metallurgy and mechanical engineering, porcelain and ceramics, woodworking and graphics.

The Limousin is piloting two competitiveness clusters: Elopsys (microwave, photon and secure networks) and ceramic (the region has one third of the national research strength in the sector).

It is also associated with 4 others and also has 15 rural centres of excellence. The Limousin has a high-tech area (Ester at Limoges), and some 10 business incubators with almost 200 business zones. Limousin businesses are supported by local skills, where the R & D sector employs almost 1,800 people (more than half of them in research).

Higher education with 21,500 students comes in a variety of forms particularly through engineering schools and the University of Limoges that has kept its human size whilst developing sector of excellence – optics and micro-waves, biotechnologies, semiotics, amongst other things. The International Office for Water is the world authority on water management and treatment and accepts 4,000 students per year.

Overall the Limousin enjoys a craft, business and health professional cover which meets national standards. Social economy has long been a reality here, thus in 2005 2,600 establishments (associations, cooperatives, friendly societies) employed over 24,000 wage earners, which is however 10.6% of total employment. Tourism should not be forgotten, which provides nearly 9,000 direct or indirect jobs.

The Limousin has the best regional survival rate – 5 years - for businesses (60% in 2007).



A region on a human scale, providing both nature and amenities

The Limousin is an Occitanian region, with a rich heritage (some thousand listed buildings or historic monuments). There is an old tradition of arts and crafts: porcelain and enamel at Limoges, tapestry at Aubusson to give the best known examples. There are some twenty performing arts centres in the region. Some fifty professional companies of artists also contribute to the arts scene in the area and promote contact with the public.

The many festivals and events are witness to club and charity involvement. Some of these have an international range, such as the International French-speaking Festival of Limoges or the Book Fair at Brive.

The Limousin is also the area of choice for the plastic arts; there are some 20 structures throughout the region, 13 of which specialise in contemporary art.

A favourite filming area because of its architecture and landscape, 21 films were shot in the area in 2007. It is interesting to note that the Limousin has the second largest proportion of municipal library members. The Limousin Regional Book Centre helps to promote local publishers and authors.

A region noted for the omnipresence of water, the Limousin has a protected environment including in particular 2 Regional National Parks and numerous sites of outstanding natural beauty (peat bogs, moorland, rockfalls). The forested area comprises 4% of French woodland. The Limousin environment is also energy-managed with a renewable energy production over the national average, and ranks second in waste conversion.

The information in this document will allow you to discover the modern Limousin. So as to assist the region and its inhabitants with current changes and to define the area's basic sustainable development guidelines, an economic forecasting by 2027 was approved in June 2009 in the regional council's plenary meeting. It is to outline future possibilities through a SRADDT (a regional development and sustainable development plan approach for the area). It is supplemented by a SRIT (regional plan for infrastructures and transport) and an Agenda 21, also approved at the same meeting.

LIMOUSIN.doc

IDENTITY CARD

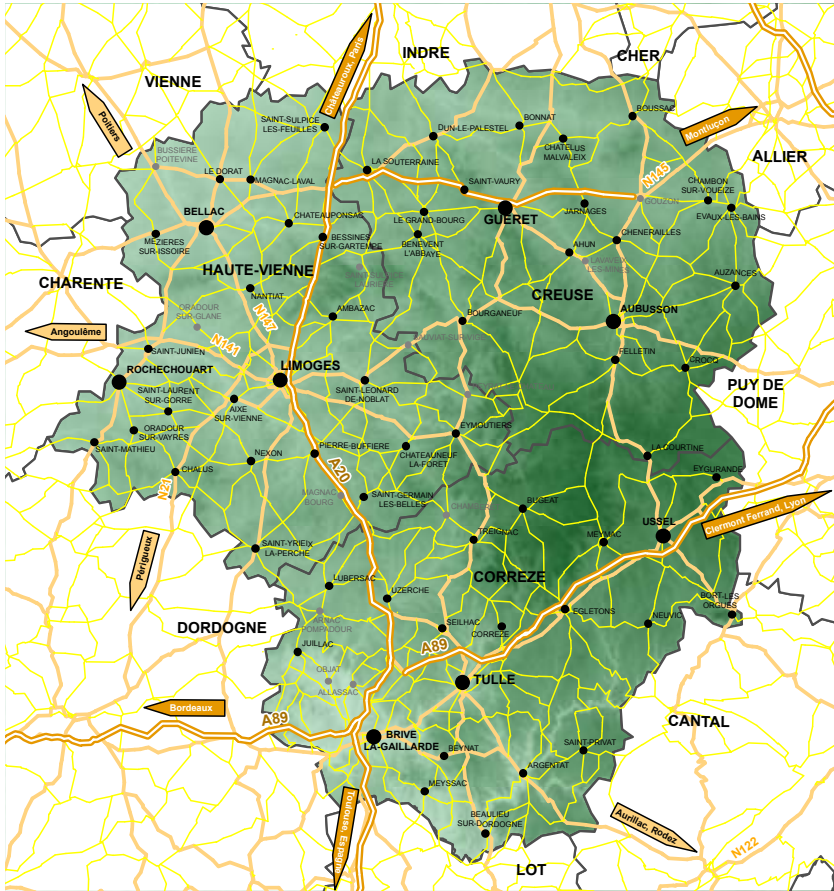
Population	737,000 inhabitants (Municipal population 2007)
Surface area	16,942 km ²
Density	43 inhabitants per km ²
Number of communes	747
GDP	24,518 € per inhabitant (2007 provisional data)

Source: INSEE

Arrondissements	8
Cantons	106
Communes	747
Urban areas	2
Groups of communes	65
Countries	17
Regional National Parks	2

Source: Insee - DGCL

The Limousin: communication networks and relief



Main towns in the Limousin (centres offering services)

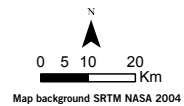
- Prefectures and sub-prefectures
- Canton administrative centre
- Single commune

Transport infrastructures

- Motorways
- Main roads
- Departmental roads

Administrative boundaries

- Departmental boundaries



LIMOUSIN.doc

DEMOGRAPHY

Population distribution by age band 2006

	Limousin	Province	Metropolitan areas
under 20	20.3%	24.5%	24.8%
20 to 59	51.2%	53.0%	53.8%
60 and over	28.5%	22.5%	21.4%

Source: INSEE-Annual Population Survey 2006

Field: Household population

Urban and rural population 2006

	Limousin	Province	Metropolitan areas
Predominantly urban space	62.0%	77.8%	82.0%
Predominantly rural space	38.0%	22.2%	18.0%

Source: INSEE - population census 2006

Predominantly urban space:

a group of urban centres, out-of-town communes and communes with a number of employment centres

Predominantly rural space:

a group of communes that does not belong to the predominantly urban space



Demographic indicators

	Limousin	Metropolitan areas
Birth rate (per 1,000 inhabitants) 2007	9.7	13.0
Death rate (per 1,000 inhabitants) 2007	11.8	8.4
Life expectancy at birth (in years) 2006		
Men	77.1	77.3
Women	84.4	84.1

Source: DRASS STATISS 2009 - INSEE Civil status registry and Estimated population

Population of the main conurbations 2006

	Conurbation	Proportion of the regional population	Urban area	Number of communes in the urban area
Limoges (87)	177,439	24.3%	259,791	78
Brive (19)	67,913	9.3%	94,000	33
Tulle (19)	18,779	2.6%	31,693	22
Guéret (23)	13,789	1.9%	28,374	28

Source: INSEE - population census 2006

Conurbation :

a group of dwellings such that none is separated from its nearest neighbour by over 200 metres and which contains at least 2,000 inhabitants.

Urban area :

a group of communes, adjoining each other and with no enclave, formed by an urban centre, rural communes or urban units (out-of-town ring) in which at least 40 % of the employed resident population works in the centre or in communes attracted by the centre.

LIMOUSIN.doc

EDUCATION AND TRAINING

Primary and secondary schooling 2009-2010

	Pupil numbers		Number of state schools	
	Public	Private	Public	Private
Primary	57,886	3,296	663	9
Secondary	48,080	4,952	128	23
"Collèges" - SEGPA	27,009	2,526	77	10
"Vocational Lycées"+ SEP	6,307	605	25	5
EREA	98		1	
"Lycées"	14,666	1,821	25	8

Source: Limoges Education Authority

SEGPA : special general and vocational education sections

SEP : vocational training section

EREA : regional special education centre

Baccalaureate pass rates 2009

	Limousin	France
All categories	86.8%	86.0%
General baccalaureate	89.1%	88.8%
Technology baccalaureate	80.2%	79.7%
Vocational baccalaureate	89.4%	87.1%

Source: Ministry of Education - Definitive results

Vocational training

11,849 trainees have followed a vocational training course financed by the Limousin Regional Council in 2008 (all options combined).

Source: Limousin Regional Council

Number of students 2007 - 2008

	Limousin
Classes preparing for the "grandes écoles"	510
Higher Technician Sections	3,208
University	13,984
Engineers	1,055
IUFM	727
Business schools, colleges of commerce, sales, management, accountancy	126
Other schools and training courses	2,453
Total (1)	21,430

Source: Ministry of Education

(1) Without counting twice over the engineering schools belonging to universities, universities of technology and polytechnics (INP).

Students have a choice of 16 higher educational establishments, including 4 university sites.

Main higher education opportunities

University of Limoges:

- Five training and research units: Economical sciences and law, sciences and techniques, medicine, pharmacy, literature and social sciences.
- Two engineering schools including one associated
- 4 institutes (IUT, IPAG, IAE, IUFM)

- **ENSA – Limoges-Abusson higher educational school of art**

Is one of the 6 national French schools of art. Education is structured on ART and DESIGN options that integrate the practices of ceramics and textile

- **ENSCI – National school of higher education for industrial ceramics**

The only engineering Grande Ecole (top ranking university) in France and the most important in Europe in its speciality. The ENSCI trains engineers in 3 years, in strong liaison with the manufacturing milieu, for the ceramics, glass and hydraulic binder industries.

- **ENSIL – The Limoges national school of higher education for engineers**

Trains engineers in four specialities:

Water and Environment / Electronics, Telecommunications and Instrumentation
Mechatronics / Surface Treatments, Materials and Environment.

- **ESEL – School of higher education for safety and the environment**

Training for superior technicians in safety at work.

- **EATP – Training school for the Civil Engineering professions**

Private university that does not insist upon having any initial training. Each year, the EATP recruits nationally 225 students from 15 to 18 years old to prepare them for the National diploma of CAP (certificate of professional competence), BEP (technical school certificate) and professional Baccalaureate in the civil engineering fields.

- **3IL Group - Limoges institute of computer engineering**

Set up on the initiative of the Limoges and the Haute-Vienne CCI, the 3IL school trains computer engineers.
Other sites: Rodez, Caen, Versailles, Morocco and Burkina Faso.

- **ISMIB – Institute of higher education in management for wood industries**

Training for executives (recruitment with Baccalaureate + a 2-year technical university degree) with a double speciality of managing director for the wood industries.

- **OIEau – International water office**

The OIEau is to help public and private establishments develop their scope of activities in the drinking and waste water treatment field.

- **Sup'Reha – School of higher education for the rehabilitation of housing conditions and quality of life**

Trains from the workman to the engineer in the 3R fields: Renovation, Rehabilitation and Restoration. Two entities coexist: One in the context of in-house training and advice assistance, and the other in the context of apprenticeship in higher education.

The engineering diploma is issued by the CNAM (national school of engineering and technology) in partnership with SUP'REHA.

LIMOUSIN.doc

RESEARCH
AND DEVELOPMENT

Key R&D indicators 2006

	R&D employees	No. of researchers	Internal expenditure (millions of €)
Private R&D	1,062	447	102
Gov. R&D	748	540	49
Total	1,810	987	151

Source: Ministry of Higher Education and Research - 2009

105 patents lodged in 2007.

7.6 M€ in innovation grants for 151 projects in 2008 *Source: Oséo Limousin - 2009*

The Limousin coordinates 2 inter-regional competitive clusters

- Elopsys: microwave, photonic and secure network technologies
- European ceramics centre

and is involved in 4 other inter-regional competitive clusters

- ViaMéca
- Cancer Bio-Health
- InnoViandes (Meat and meat products)
- Electrical energy sciences and systems

4 research institutes:

	Research lecturers	Researchers	PhD students
XLIM	146	19	201
IPAM	76	13	78
GEIST	134	6	112
SHS	155	2	288
Total	511	40	679

XLIM: Cryptography and coding, development of components and VHF systems for communication systems, development of components, optical systems and optoelectronics, digital engineering, signal and image treatment.

IPAM (institute for processes applied to materials) (University of Limoges +ENSCI): Ceramic processes and surface treatments. Materials for producing energy, information and communication technologies and high temperature applications. Nanomaterials. Biomaterials. Ecomaterials. Mechanical and thermic behaviour of heterogeneous materials. 2 associated teams including 1 at the CNRS (SERC).

Institute of Genetics, Environment, Immunity, Health and Therapeutics (GEIST – IF R 645): Physiology and genetics, lymphocytic and muscular differentiation, lymphomagenesis, glycosylation, bacterial resistances, pharmacology of immunosuppressive drugs, new anti-tumorous molecules, epidemiology, and the impact of biological and metallic polluting agents. 9 associated teams including 1 at the SERC, 1 at the INRA (national institute for agronomic research) and 2 at the INSERM (national institute for health and medical research).

SHS (Institute for the sciences of man and society): Legal, economical, management, sociological, historical, geographical, literary, semiotic and linguistic studies and research on the themes:

- Sustainable development and environment of the areas
- Business behaviour and economical performances, financial risks and markets,
- Administration, institutional policies and changes, governance processes and membership relationships
- Literature, languages, cultures and methods of communication
- Apprenticeships, training and education
- Professional sport and amateur practices

9 associated teams including 1 at the SERC.

Source: University of Limoges Science Council - 2009

15 rural centres of excellence have been awarded labels in the Limousin in Corrèze

- Tourism and leisure in Monédières
- Pompadour horse-riding and tourist centre
- PIERREnfançance intercommunity centre for rural excellence and revitalisation
- Corrèze Calves
- Combining creativity, initiatives and sustainable development
- Centre of Excellence for the Revival of rural town centres
- ICT in Haute Corrèze
- Setting up and forming a network of “Retrouvance” group accommodation units in the “PNR Millevaches” in the Limousin

in Creuse

- Water, spring and spa resource centre
- Guéret home automation and health centre
- Gouzou agriculture and landscape centre
- Rehabilitation of the « Couvent de la Souterraine » site

in Haute-Vienne

- Structuring and promotion of the sheep-farming industry in northern Haute-Vienne
- Creation of a wood-energy industry
- Creation of a farmhouse inn and a collection unit for the production of chestnuts

LIMOUSIN doc

LIVING CONDITIONS

Average net annual salaries for full-time jobs (€) 2006

	Limousin	Metropolitan areas
Managers*	40,872	46,216
Intermediate professions	22,072	23,566
Employees	15,738	16,325
Workers	16,231	17,083
Combined	19,753	23,306

Source: INSEE DADS (1/12 exploitation)

* Including salaried company directors

Gross disposable income per inhabitant (GDI) 2005

	Limousin	Province	Metr. areas	France
Total (€)	17,847	17,191	18,080	17,888
Index (France = 100)	100	96	101	100

Source: INSEE - provisional regional household financial accounts - Base 2000.

GDI: main income plus transfers received (social allowances other than benefits in kind), less tax and social security contributions. It is the proportion of main income that remains available to resident households for consumption and savings.

Accommodation stocks 2006

	Limousin	Province	Metr. areas
Main residences	334,979	21,240,569	26,070,381
of which private houses	70.4%	62.7%	56.2%
Second homes and occasional accommodation	54,702	2,918,313	3,068,558
Vacant housing	38,158	1,621,669	1,950,623
Total accommodation units	427,839	25,780,551	31,089,562

Source: INSEE - Annual Population Surveys 2006, field: household population

Place of residence 5 years previously 2006

	Limousin	Metropolitan areas
Same region	89.9%	91.9%
same commune	77.2%	75.8%
same accommodation	66.9%	64.5%
Another region or abroad	10.1%	8.1%

Source: INSEE - Annual Population Surveys 2006, field: household population

Council housing stocks at 01/01/2008

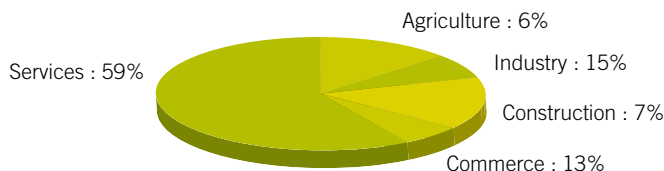
	Limousin	Metropolitan areas
Total	38,291	4,329,136
Council flats	83.2%	84.5%
Council housing	16.8%	15.5%
Density per 1,000 inhabitants	52	70

Source: Regional Public Amenities Department, Ministry of Ecology, and Sustainable Development and Improvement

LIMOUSIN.doc

JOBS - UNEMPLOYMENT

Job estimates by activity sector at 31/12/2007 (provisional)



Source: INSEE

Labour force participation rate 2006

	Limousin	Province	Metropolitan areas
Combined	70.5%	70.7%	71.5%
Men	73.5%	75.4%	75.9%
Women	67.4%	66.1%	67.2%

Source: INSEE - Annual population surveys 2006 - Active population between the ages of 15 and 64

Unemployment

	Limousin	France
Unemployment rate* 2 nd quarter 2009	7.7%	9.1%
Jobseekers (category A) october 2009	24,217	2,627,300

*Quarterly unemployment rates localized per region (seasonally adjusted average over quarter)

Source: DRTEFP - ANPE

Salaried and non-salaried job estimates by activity sector at 31/12/2007*

	Salaried	Non-salaried	Total
Agriculture	3,782	14,232	18,014
Industry	41,464	2,338	43,802
Construction	17,433	4,118	21,551
Commerce	31,816	4,875	36,691
Services	159,131	10,687	169,818
Total	253,626	36,250	289,876

Source: INSEE Job estimates - *provisional-data

Salaried employment by socio-professional category in industry 2006

	Limousin	Province	France
Company directors and managers	8.3%	10.4%	13.8%
Intermediate professions	17.5%	19.2%	20.2%
Employees	9.3%	9.4%	9.6%
Unskilled workers	19.3%	19.1%	17.6%
Skilled workers	45.6%	4.8%	38.8%

Source: INSEE – DADS 2006

ECONOMIC ACTIVITY

Number of establishments and salaried employees by sector 2008

	Employer establishments	Salaried employees			%
		Men	Women	Total M/W	
Agriculture, forestry and fishing	13	19	6	25	0.0%
Extractive industries	51	424	80	504	0.3%
Manufacturing of foodstuffs, drinks and tobacco based products	677	3,932	2,484	6,416	4.2%
Textile manufacturing, clothing industries, leather, and shoe industry	72	615	1,166	1,781	1.2%
Wood work, paper and printing industries	221	4,583	1,591	6,174	4.0%
Coking and refining	2	43	9	52	0.0%
Chemical industry	17	315	274	589	0.4%
Pharmaceutical industry	3	177	187	364	0.2%
Manufacturing of rubber and plastic products and other non-metallic mineral products as well	177	2,400	1,252	3,652	2.4%
Metal industry and metal product manufacturing other than machines and equipment	170	4,254	638	4,892	3.2%
Manufacturing of computer, electronic and optical products	28	721	523	1,244	0.8%
Electrical equipment manufacturing	28	2,187	1,203	3,390	2.2%
Manufacturing of not otherwise classified machines and equipment	57	1,021	275	1,296	0.8%
Manufacturing of transport materials	27	1,462	216	1,678	1.1%
Other manufacturing industries; repairing and installing machines and equipment	295	1,846	962	2,808	1.8%
Production and distribution of electricity, gas, steam and air conditioning	18	227	20	247	0.2%
Water, waste and depollution management	78	1,064	177	1,241	0.8%
Construction	2,436	15,005	1,619	16,624	10.9%
Automobile and motorcycle trade, reparation	4,310	15,334	15,250	30,584	20.0%
Transport and storage	402	5,504	1,366	6,870	4.5%
Accommodation and catering	1,399	2,820	3,876	6,696	4.4%
Publishing, audiovisual and diffusion	97	533	457	990	0.6%
Telecommunications	22	109	92	201	0.1%
Computer activities and information services	85	343	209	552	0.4%
Financial and insurance activities	777	1,708	2,583	4,291	2.8%
Real estate activities	441	419	811	1,230	0.8%
Legal, accounting, management, architectural, engineering, control and technical analysis activities	883	1,938	2,847	4,785	3.1%
Scientific development-research	26	159	193	352	0.2%
Other specialised, scientific and technical activities	312	558	1,101	1,659	1.1%
Administrative and support service activities	1,194	6,348	7,130	13,478	8.8%
Public administration	55	630	1,961	2,591	1.7%
Education	229	1,104	1,353	2,457	1.6%
Activities for human health	870	1,256	4,813	6,069	4.0%
Medico-social and welfare housing and social programmes without accommodation	514	2,234	8,971	11,205	7.3%
Arts, shows and recreational activities	507	816	875	1,691	1.1%
Other service activities	1,233	1,104	2,891	3,995	2.6%
Grand total	17,726	83,212	69,461	152,673	100.0%

Source: ASSEDIC 2008 - Provisional data

Number of establishments by size at 31/12/2006

	Limousin		Province		Metr. areas	
	Number	%	Number	%	Number	%
0 employee	21,167	50.25%	1,514,309	52.41%	2,012,404	53.60%
1 to 9 employees	16,855	40.01%	1,094,122	37.87%	1,389,105	37.00%
10 to 19 employees	2,010	4.77%	138,560	4.80%	173,272	4.61%
20 to 99 employees	1,794	4.26%	120,353	4.17%	150,376	4.01%
100 empl. and more	298	0.71%	21,918	0.76%	29,463	0.78%
Total	42,124	100.00%	2,889,262	100.00%	3,754,620	100.00%

Source: INSEE

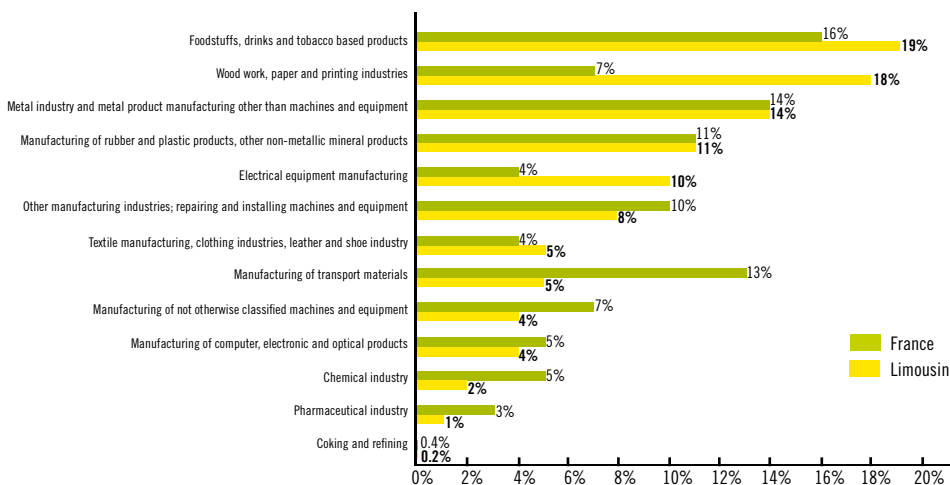
Field : active professional employment on 31 December, excluding agriculture, defense and interim sectors.

Gross added value by activity sector at current prices 2008 (Provisional data)

	Limousin	Metropolitan areas
Total gross added value (millions of €)	16,384	1,719,718
Agriculture, forestry and fishing	3.7%	2.0%
Industry	13.5%	13.9%
Construction	8.3%	6.7%
Mainly commercial services	45.9%	56.2%
Administered services	28.6%	21.2%

Source: INSEE - Regional accounts based on 2000

Employee distribution by industrial activity sector 2008



Source: ASSEDIC 2008 - Provisional-data

Main establishments 2006

Establishments - Commune	Paid employees	Activity
Dupuytren Teaching Hospital - <i>Limoges (87)</i>	4000 à 4999	Hospital activities
Legrand - <i>Limoges (87)</i>	2000 à 2999	Manufacturer of distribution material and electrical control apparatus
Limoges Council - <i>Limoges (87)</i>	1500 à 1999	Public administration
Dubois Hospital - <i>Brive-la-Gaillarde (19)</i>	1500 à 1999	Hospital activities
SNCF - <i>Limoges (87)</i>	1500 à 1999	Rail transport
Esquirol specialised Hospital - <i>Limoges (87)</i>	1000 à 1499	Hospital activities
Guéret Hospital - <i>Guéret (23)</i>	1000 à 1499	Hospital activities
Tulle Hospital - <i>Tulle (19)</i>	750 à 999	Hospital activities
Brive-la-Gaillarde municipality - <i>Brive-la-Gaillarde (19)</i>	750 à 999	Public administration
SNCF - <i>Brive-la-Gaillarde (19)</i>	750 à 999	Rail transport
Madrangé - <i>Feytiat (87)</i>	500 à 749	Factory prepared meat-based products
Post Office Financial services - <i>Limoges (87)</i>	500 à 749	National post offices
Photonis - <i>Brive-la-Gaillarde (19)</i>	500 à 749	Manufacturing of active electronic components
Home assistance for the elderly and in difficulty - <i>Limoges (87)</i>	500 à 749	Home assistance
Saint-Junien Hospital - <i>Saint-Junien (87)</i>	500 à 749	Hospital activities
Department of the Haute-Vienne - <i>Limoges (87)</i>	500 à 749	Public administration
Dupuytren teaching hospital, Jean Rebeyrol Hospital - <i>Limoges (87)</i>	500 à 749	Hospital activities
Limousin Region - <i>Limoges (87)</i>	500 à 749	Public administration
Legrand SNC - <i>Limoges (87)</i>	500 à 749	Wholesale trade of electrical material
Ussel Hospital - <i>Ussel (19)</i>	500 à 749	Hospital activities
Bledina - <i>Brive-la-Gaillarde (19)</i>	500 à 749	Manufacturing of children's food and health-food
ASP Services and payment agency - <i>Limoges (87)</i>	250 à 499	Supervision of economic activities
Dupuytren teaching hospital, Docteur Chastaingt Hospital - <i>Limoges (87)</i>	250 à 499	Hospital activities
Renault Trucks - <i>Limoges (87)</i>	250 à 499	Automobile construction
Departmental association for the elderly - <i>Brive-la-Gaillarde (19)</i>	250 à 499	Home assistance
SCA Packaging Nicolle - <i>Rochechouart (87)</i>	250 à 499	Corrugated cardboard industry
Dagard - <i>Boussac (23)</i>	250 à 499	Manufacturer of metal constructions
SICAME - <i>Amac-Pompadour (19)</i>	250 à 499	Manufacturer of distribution material and electrical control apparatus
Coopérative fruitière du Limousin - <i>Saint-Aulaire (19)</i>	250 à 499	Wholesale trade of fruit and vegetables
Valeo matériaux de friction - <i>Limoges (87)</i>	250 à 499	Manufacturer of automobile equipment
Clinique François Chénieux - <i>Limoges (87)</i>	250 à 499	Hospital activities
Transcom Worldwide (France) SAS - <i>Favars (19)</i>	250 à 499	Call centres
International Paper - <i>Saillat-sur-Vienne (87)</i>	250 à 499	Paper and cardboard manufacturer
Penauille Polyservices - <i>Sarran (19)</i>	250 à 499	Cleaning activities
Departmental public safety service - <i>Limoges (87)</i>	250 à 499	Police
La Valette Hospital - <i>Saint-Vaury (23)</i>	250 à 499	Hospital activities
Wagon Automotive SAS - <i>La Souterraine (23)</i>	250 à 499	Cutting, drawing
Jacques Boutard Hospital - <i>Saint-Yrieix-la-Perche (87)</i>	250 à 499	Hospital activities
OPHLM Limoges - <i>Limoges (87)</i>	250 à 499	Property rental
Caisse Primaire d'Assurance Maladie DHSS - <i>Limoges (87)</i>	250 à 499	General social security activities

Source: INSEE - CLAP 2006

► SELF-EMPLOYED TRADESPEOPLE

Distribution of self-employed tradespeople at 01/01/2008

	Number of firms	Number of employees
Food	2,123	4,972
Production	2,329	7,113
Transports, repairs, services and miscellaneous	3,950	9,539
Building	5,508	10,556
Total	13,910	32,180

Source: Limousin Regional Chamber of Trade

Estimated economic weight of self-employed tradespeople in the Limousin (2004)

- 2.3 billion € in sales
- 0.9 billion € in added value

► AGRICULTURE

Farms and active population

	Limousin	Metropolitan areas
Number of farms (in 2007)	14,324	506,926
Professional	67%	64%
Population working in agriculture (in 2006)	27,733	1,019,525
Average size of farms (in 2006)	60 ha	54 ha
Area used for agriculture (in 2008)	873,700 ha	29,314,100 ha

Source: AGRESTE - Structure survey 2005 and annual agricultural statistics

Livestock 2008

	Limousin	Metropolitan areas
Cattle	1,134,462	19,887,458
Sheep	575,080	8,187,327
Pigs	146,870	14,805,549

Source: AGRESTE - Annual agricultural statistics

Production 2008 (in millions of €)

	Limousin
Animal products	650.9
Vegetable products	359.9
Services	44.8
Total excluding subsidies	1 055.6

Source: AGRESTE - Annual agricultural statistics

► FORESTRY

Wood harvesting 2007 in thousands of m³

	Limousin	% Limousin
Timber	1,227	58.1%
deciduous	182	8.6%
coniferous	1,045	49.5%
Pulp wood	792	37.5%
deciduous	518	24.5%
coniferous	273	12.9%
Marketed energy wood*	91	4.3%
Total	2,110	100.0%

Source: AGRESTE – Forestry and Sawmills

* energy wood collected and marketed by forest exploiters

Woodland : 584,280 ha - proportion of private forest: 95%

Source: AGRESTE - Agricultural statistics 2008 (Provisional data)

► COMPANY START-UPS 2008

	Limousin	France
Industry	222	15,177
Construction	551	54,306
Commerce and reparation	607	124,516
Services	1,293	133,397
Total	2,673	327,396
Start-up rates	9%	11%
Company failures	506	40,157
5-year survival rate	60%	53%

Creation rate: total number of creations (pure creations + recoveries + reactivations) with respect to the companies stock in the same year.

Survival rate for company information created in 2002

Source: INSEE - New company information system (Sine) and BODACC

► COMMERCIAL SERVICES

Distribution of establishments and employees by activity 2007

	Establishments	Employees
Businesses	4,420	31,102
Transports	492	7,284
Financial activities	592	3,610
Property activities	1,208	2,350
Company services	1,846	23,520
Post and telecommunications	35	306
Advice and assistance	1,166	7,209
Operational services	619	15,691
Research and Development	26	314
Services to individuals	2,680	10,710
Hotels and restaurants	1,415	6,731
Recreational, cultural and sporting activities	578	2,153
Personal and domestic services	687	1,826

Source: ASSEDIC 2007 - Provisional data

Density of self-service stores 2009 (in m2 per 1,000 inhabitants)

	Limousin	Metropolitan areas
Hypermarkets	168	150
Supermarkets	165	113
Hard discount	48	51
DIY (1)	180	119
Garden centres	119	79

(1) Not including trade shops (specialised shops proposing a wide range of products for all the building trades)

Source: Nielsen Tradedimensions 2009 - INSEE

► TOURISM

Type of accommodation 2008

	Establishments	Beds
Approved hotels	260	11,198
Country inns	5	60
Tourist residential complexes	4	1,105
Campsites	185	37,074
Natural campsites	34	2,018
Motor home sites and terminals	95	ND
Farm campsites	13	300
Gîtes de France guestrooms	333	2,457
Clévacances guestrooms	31	197
Farmhouse guestrooms	10	69
"Fleur de soleil" guestrooms	1	8
Listed, unlabelled furnished accommodation	631	2,618
Gîtes de France furnished accommodation	1,543	8,619
Clévacances furnished accommodation	311	1,451
Farmhouse furnished accommodation	21	100
Overnight and holiday gîtes	23	470
Gîte hamlets	50	3,328
Holiday villages	19	5,380
Other structures (Children's gîtes youth hostels, leisure centres...)	34	1,422
Total commercial	3,603	77,874
Second homes	54,346	271,733
Total	57,949	349,607

Source: Limousin Regional Tourist Authority 2009

Foreign tourists 2007

	Number of overnight stays
Listed or chain hotels (January to December)	163,799
Campsites (May to September)	267,436
Total	431,235

Source: INSEE, Tourism Department

Regional tourism accounts 2006

	Limousin	% France
Overnight stays (in millions)	12.2	1.2
Tourist consumption (in millions of €)	787	1.4
Employment in the tourist trade (DADS 2003)	8,900	

Data for 2006 cannot be compared with data for 2005: the number of nights accommodation for French residents aged under 15 and for foreigners is no longer provided by this source.

Source: Limousin Regional Tourist Authority

► EXTERNAL TRADE

Exports: 1,783 millions € - Main client countries 2008

	In millions of €	as a %
Italy	339	19.0%
Germany	282	15.8%
Spain	214	12.0%
United Kingdom	125	7.1%
Greece	94	5.3%
Total for the 5 main client countries	1,054	59.2%

Source: Regional Customs and Indirect Taxes Department, Poitiers

Imports: 1,693 millions € - Main supplier countries 2008

	In millions of €	as a %
Germany	645	38.1%
United States	140	8.3%
Spain	132	7.9%
Italy	108	6.4%
Chile	102	6.1%
Total for the 5 main supplier countries	1,127	66.8%

Source: Regional Customs and Indirect Taxes Department, Poitiers

Main products exported 2008

	In millions of €	as a %
Electrical equipment	351	19.7%
Pharmaceutical products	240	13.5%
Vehicle equipment	182	10.3%
Arable and livestock farming products	162	9.1%
Paper pulp, paper and cardboard	142	8.0%
Total for the 5 main products exported	1,077	60.6%

Source: Regional Customs and Indirect Taxes Department, Poitiers

Main products imported 2008

	In millions of €	as a %
Vehicle construction products	461	27.3%
Pharmaceutical products	154	9.1%
Non-ferrous metals	120	7.1%
Electronic cards and components	89	5.3%
Paper pulp, paper and cardboard	75	4.5%
Total for the 5 main products imported	899	53.3%

Source: Regional Customs and Indirect Taxes Department, Poitiers

LIMOUSIN.doc

ENVIRONMENT AND LIVING ENVIRONMENT

► HEALTH

Density of health workers operating in the liberal professions

at 01/01/2008 (per 100,000 inhabitants)

	Limousin	France
General practitioners	127	112
Specialist consultants	62	88
Pharmacists*	152	116
Nurses	149	111
Dental surgeons	47	62
Physiotherapists	69	81

Source: DRASS - Statiss 2009 - * Statlim for pharmacists

Accommodation capacity and facilities in health establishments at 01/01/2008

Number of beds and places per 1,000 inhabitants

	Limousin	France
Short stay in hospital	6.27	5.31
Medecine	2.81	2.11
Surgery	1.95	1.62
Gynaecology, obstetrics	1.51	1.58
Post-trauma and rehabilitation treatment (medium-length stay)	1.54	1.60
Psychiatry		
infant and juvenile	1.06	0.83
adult general	2.39	1.52

Source: DRASS - Statiss - 2009

Facilities in the Limousin should be assessed in the light of the demographic characteristics of the region.

► ENVIRONMENT

- 293 communes in mountain areas (of 747 communes in the Limousin)
- Around 17,500 km of rivers, 180 of which are covered by river contracts and 3,131 km listed as migrant rivers
- 9 communes subject to the Coastlines Act (Lac de Vassivière, Bort les Orgues)
- 584,280 ha of forest, i.e. a woodland cover rate of 34% (France approx. 30%)
- 2 regional parks: Périgord Limousin (28 communes and 76,036 ha in Haute-Vienne) and Millevaches in Limousin (113 communes and 314,294 ha in the Limousin)

2009

	Number	Area
Biotope orders	13	746 ha and 70 linear km*
Natura 2000 special protection zone	36	104,429 ha
National park	3	381 ha
Regional park	5	303 ha
ZICO (Major Bird Conservation Areas)	3	87,900 ha
ZPPAUP (Areas for the Protection of Architectural, Urban and Landscape Heritage)	8	2,189 ha
Listed sites	37 (9)**	2,176 ha
Registered sites	175 (19)**	55,433 ha

Source: DIREN - July 2009

* the km correspond to the linear mileage of a river listed under biotope orders

**sites known as "isolated" in brackets (under 1 ha)

Distribution of quantities of treated waste by treatment method 2006

	Limousin	France
Recycling	7.7%	13.4%
Use as energy	39.0%	26.1%
Composting	11.1%	10.7%
Class 2 landfill site	42.2%	48.3%
Conversion into methane and incineration without conversion into energy	0.0%	1.5%

Source: ADEME SINOE database - ITOM (household waste treatment) survey

Environmental concerns incorporated by companies in the Limousin at 31/12/2006

	Number of companies
That have obtained ISO 14001 certification	70
Committed to an environmental management system (EMS)	55
That have carried out a preliminary assessment	193
That have taken part in the small firms awareness programme	1,202

Source: ADEME Report on activities 2006

► SPORT

Sports licences 2008

	Limousin	France
Football	29,776	2,278,691
Tennis	10,024	1,105,445
Rugby	8,249	327,555
Horse riding	7,619	600,805
Pétanque and "Provençal rules" pétanque	6,390	350,408
Judo	6,297	553,391
Basketball	6,150	455,116
Handball	4,881	365,131
Golf	3,487	396,990
Swimming	3,082	273,554
Other disciplines	103,426	8,893,593
Total	189,381	15,600,679
Proportion of licensed in the population	25.8%	24.5%

Source: Ministry of Youth and Sports

Countryside sport

- 7,700 km of paths marked and maintained for walking, mountain biking and horse riding
- 23 navigable rivers (810 km) for water sports
- 39 dammed rivers (5,000 ha of lakes) for sports and leisure activities in calm waters
- 16,600 ha of lakes and 9,000 km of rivers for fishing

► CULTURE

National and visual arts museums 2008

	Limousin	France
Museums of France	11	1,190
Visual arts		
Arts centres	4	59
FRAC	1	20
Art libraries	4	52

Source: Ministry of Culture - Key figures 2009

Theatre, music and dance 2007

	Limousin	France
National and regional drama centres	1	39
National theatres	1	68
Subsidised theatres	3	103
Professional musical ensembles	7	285
Modern music venues	3	136

Source: Ministry of Culture - Key figures 2009

Municipal libraries 2007

	Limousin	Metropolitan areas
Number	41	2,830
Books / inhabitant	2.06	2.79
% registered readers / population	18.7%	15.5%
Books borrowed per inhabitant	4.86	4.01
Staff expenditure per habitant in € / inhabitant	23.08	19.88
Document acquisition expenditure in € / inhabitant	3.04	3.11

Source: Ministry of Culture - Key figures 2009

LIMOUSIN .doc

TRANSPORT AND TELECOMMUNICATIONS

Airport passenger traffic 2008

	Number	Evolution 2001/2008
Brive	21,631	22.4%
Limoges	371,927	180.7%

Source: Regional Limousin Council and Limoges Airport

Direct flight destinations: Lyon St Exupéry, Paris Orly , Londres Stansted, Liverpool, Southampton, Nottingham, Newcastle, Bournemouth, Bristol, Edimbourg, Londres Luton .

Direct flight destinations: Corse-Figari et Nice.

Source: Limoges Airport - 2009

Railway infrastructure

	2009
Km of operated lines	978
<i>including electrified lines</i>	197
<i>including multi-track lines</i>	217
Number of train stations	86
Number of level crossings	420

Source: French Rail System (RFF)

French Regional Rail System (TER): Evolution in traffic for 2008

	2008
Global	+7.16%
Rail	+7.08%
Road	+7.74%
Number of trips (roundtrips counting for 2 trips)	2,077,679

Source: Regional Council of Limousin 2009

Road infrastructure 2007

	Number of km	Traffic rate in vehicles/day	in France
Highways	298	17,120	32,925
National roads	565	8,570	12,009
Departmental roads	12,732	715	1,621

Source: National Interministerial Road Safety Observatory (ONISR)

Inter-regional road transport of goods 2007

	Incoming flow	Outgoing flow
Machines, vehicles, manufactured objects and special transactions	31.09%	44.05%
Agricultural products and live animals	19.98%	19.00%
Raw or manufactured minerals and construction materials	19.33%	10.85%
Food and fodder products	14.32%	13.93%
Petroleum products	8.55%	1.90%
Chemical products	3.01%	3.84%
Fertilizers	2.37%	0.34%
Metallurgical products	0.69%	1.52%
Minerals and scrap for metallurgy	0.57%	4.55%
Solid mineral fuels	0.08%	0.00%
Total of flows (in t)	9,628,733	6,098,831

Source: Regional Office of Equipment (DRE)

Broadband Internet

The main authorities in the Limousin joined forces in 2002 to form a joint syndicate, Dorsal, so that all the towns and villages in the Limousin could receive Broadband Internet. This operation is being carried out as a public service assignment and has also received financial support from the Government and the European Union.

1,200 kilometres (745 miles) of optical fibre constitutes the network's spine connected to the big international infrastructures. 104 telephone exchanges are divided into groups to have broadband access to the Internet and 74 Wimax base stations are installed to have access to the Internet by radio waves. Ten or so service access suppliers for professionals are present on the network as well as 4 others assigned to the general public including 2 who propose Wimax offers.

Source: DORSAL

LIMOUSIN.doc

TO FIND OUT MORE

➤ **Agence de l'Environnement et de la Maîtrise de l'Energie (ADEME)**

38 ter avenue de la Libération - BP 20259 - 87007 Limoges Cedex

Tel. 05 55 79 39 34

<http://www.ademe.fr/limousin>

➤ **Chambre Régionale des Métiers du Limousin**

14 rue Belfort - 87060 Limoges Cedex

Tel. 05 55 79 45 02

<http://www.crm-limousin.fr>

➤ **Comité Régional de Tourisme du Limousin**

Maison Régionale du Tourisme

30 cours Gay-Lussac - C.S. 500 95 - 87003 Limoges Cedex 1

Tel. 05 55 11 05 90

<http://www.tourismelimousin.com/fr/>

➤ **Direction Régionale à la Recherche et à la Technologie (DRRT)**

1 avenue d'Ester - 87069 Limoges Cedex

Tel. 05 55 33 67 57

➤ **Direction Régionale de l'Agriculture et de la Forêt (DRAF)**

Le Pastel - 22 rue des Pénitents-Blancs - BP 3916 - 87039 Limoges Cedex

Tel. 05 55 12 90 00

http://agreste.agriculture.gouv.fr/region_5/limousin_138/

➤ **Direction Régionale de l'Environnement, de l'Aménagement
et du Logement (DREAL)**

Le Pastel - 22 rue des Pénitents-Blancs - BP 3916 - 87032 Limoges Cedex

Tel. 05 55 12 90 00

<http://www.limousin.equipement.gouv.fr>

➤ **Direction Régionale de la Jeunesse, des Sports
et de la Cohésion Sociale (DRJSCS)**

24 rue Donzelot - 87037 Limoges Cedex

Tel. 05 55 45 24 50

<http://www.limousin.jeunesse-sport.gouv.fr>

➤ **Direction Régionale des Affaires Culturelles (DRAC)**

6 rue Haute de la Comédie - 87036 Limoges Cedex

Tel. 05 55 45 66 00

<http://www.limousin.culture.gouv.fr>

➤ **Direction Régionale des Douanes et Droits Indirects de Poitiers**

32 rue Salvador Allende - BP 545 - 86020 Poitiers Cedex

Tel. 05 49 42 32 00

<http://www.douane.gouv.fr>

➤ **Direction Régionale du Commerce Extérieur (DRCE)**

86 avenue Baudin - 87036 Limoges Cedex

Tel. 05 55 32 94 25

<http://www.dgtpe.fr/drce/limousin>

➤ **Direction Régionale du Travail, de l'Emploi
et de la Formation Professionnelle (DRTEFP)**

2 allée Saint-Alexis - 87032 Limoges Cedex

Tel. 05 55 11 66 00

<http://www.limousin.travail.gouv.fr>

➤ **Institut National de la Statistiques
et des Etudes Economiques (INSEE)**

50 avenue Garibaldi - 87031 Limoges Cedex

Tel. 05 55 45 20 07

<http://www.insee.fr>

➤ **Préfecture de la Région Limousin**

1 rue de la préfecture - BP 87031 - 87031 Limoges Cedex 1

Tel. 05 55 44 18 00

<http://www.haute-vienne.pref.gouv.fr>

➤ **Rectorat de l'Académie de Limoges**

13 rue François Chénieux - 87031 Limoges Cedex

Tel. 05 55 11 40 40

<http://www.ac-limoges.fr/>

➤ **Université de Limoges**

Hôtel de l'Université

33 rue François Mitterrand - 87032 Limoges Cedex

Tel. 05 55 14 91 00

<http://www.unilim.fr/>



LIMOUSIN EXPANSION

26 rue Atlantis - BP n°36984 - F- 87069 Limoges Cedex
Tél. 33(0)5 87 21 21 21
www.limousin-expansion.fr

MAISON DE LA RÉGION EN CORRÈZE

3 place Carnot - F- 19000 Tulle
Tél. 33(0)5 55 29 00 29
E-mail : maisondelaregion19@cr-limousin.fr



RÉGION LIMOUSIN

27 bd de la Corderie - F- 87031 Limoges Cedex
Tél. 33(0)5 55 45 19 00
www.region-limousin.fr

MAISON DE LA RÉGION EN CREUSE

6 bd Carnot - F- 23000 Guéret
Tél. 33(0)5 55 80 32 80
E-mail : maisondelaregion23@cr-limousin.fr